

## Configure Filter Expressions

This feature was added in Wireshark 1.8 and is fantastic! Simply select **Add**, enter a label and display filter as shown in Figure 99. (You can also create a display filter and click the **Save** button on the display filter area.) Filter Expression buttons are shown in the display filter area.

### Use New Filter Expression Buttons for Faster Troubleshooting

*As you go through this book and add display filters and coloring rules, save the best ones as Filter Expression buttons to rapidly apply the filters to the traffic. This is one of the hottest recent features added to Wireshark!*

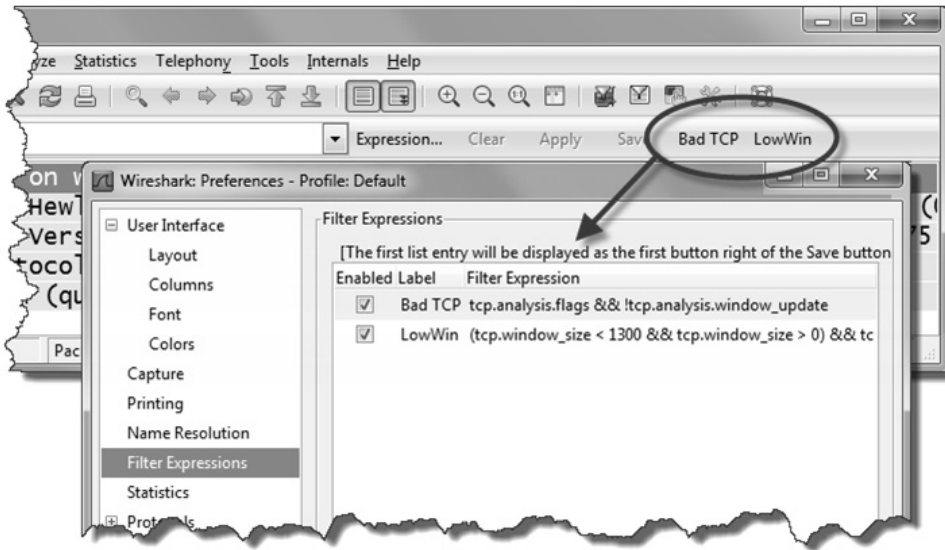


Figure 99. Create filter expressions to speed up troubleshooting tasks

You don't need to use the Preferences window to add Filter Expressions. Try typing in a display filter and clicking the Save button. You will be prompted to name your Filter Expression as shown below. At the current time you will need to return to the Preferences | Filter Expressions area to rename or edit your Filter Expression.

